



PATHWAYFIT®
DIET, NUTRITION & EXERCISE
PERSONAL GENETIC REPORT

Protected Health Information

Hello Timothy,

Pathway Genomics is pleased to present you with your personalized metabolism, diet, nutrition and exercise report. This report is based on a DNA test and the lifestyle information that you recently submitted. It is well-documented that genetics accounts for 40 to 70% of a person's predisposition to obesity¹. If you are thinking about starting a weight loss program or just maintaining a healthy diet, the goal of this test is to give you information about yourself that may help you modify your behavior.

Pathway Genomics' onsite laboratory is accredited by the College of American Pathologists (CAP), accredited in accordance with the U.S. Health and Human Services' Clinical Laboratory Improvement Amendments (CLIA), and licensed by the California Department of Public Health. We tested over 75 genetic markers to provide you with the latest, most comprehensive, and scientifically-advanced recommendations on diet, nutrition, exercise, addictive behaviors and weight-related health conditions. Pathway Fit® was developed with input from medical and scientific experts from leading institutions, such as UC Berkeley, Harvard Medical School, Scripps Clinic, Pennington Biomedical Research Center, Salk Institute for Biological Studies, and the University of Copenhagen. This report provides personalized information, based on your genetics and lifestyle, to help you meet the following goals:

- Understand your metabolism and behavior traits
- Reach and maintain a healthy weight
- Get the most benefit from physical activity and exercise
- Optimize the nutritional balance of your diet

A licensed physician has already reviewed your report; however, it is important that you discuss any modifications to your diet, exercise and nutritional supplementation with your physician before making any changes.

Pathway is here to help. If you have questions or concerns regarding any aspect of this report, please contact our staff of genetic, medical or nutritional counselors by logging in to your Pathway Genomics account at www.pathway.com, or call us at (877) 505-7374. We are delighted we can help you on your path to optimum wellness.



Michael P. Nova, M.D.
Chief Medical Officer

NOTE: This report has not been evaluated by the FDA. This product is not intended to diagnose, treat, cure, or prevent any disease.



Personal Details

Name: Timothy Parrett
DOB: Sep 26, 1967
Gender: Male
Ethnicity: Caucasian
Indication: Population Screening
Report Date: Dec 12, 2011
Received Date: Nov 16, 2011

Ordering Healthcare Professional

Linda Wasserman MD, PHD
 4045 Sorrento Valley Blvd.
 San Diego CA, 92121 US
NPI: 1033265780

Lab Director: James R. Nickel, M.D.

James R. Nickel MD.

Test Performed / Method

Genotyping by array-based evaluation of multiple molecular probes

Laboratory Info

Accession #: B0002960
Activation Code: PGKZF-AMUKL
Specimen Source: Saliva
Collected Date: Not provided



SCIENTIFIC STRENGTH RATING SYSTEM

The genetic markers and studies selected for this report represent the best and most recent genetic research in diet, nutrition, exercise and weight-related health conditions. Some research can be described as stronger than others based on the size of the population studied and whether the outcome has been replicated. Due to the current state of scientific research on the genetics of diet, exercise and nutrition, most of the studies referenced in your report are based on individuals of Caucasian ethnicity. While we all have the same genes, there are genetic and non-genetic factors in different ethnicities that might yield different outcomes for non-Caucasian populations. Your report includes a star system, described below, to rate the strength of the research evidence for the genetic marker and the associated result.

★★★★★

Results derived from a large study of approximately 2,000 or more people, with at least one additional study showing the same results (replication study).

★★★★☆

Results derived from a moderately-sized study of at least 400 people, with or without a replication study.

★★★☆☆

Small study of less than 400 people in some cases, with other small replicated studies. Results in this category are preliminary, but pass our criteria for statistical significance.

★★★☆☆

Results in this category should be considered extremely preliminary.

Disclaimer

This report is intended as educational information, and is not intended to be used solely by the patient in medical decision-making without the consultation of a licensed health care professional. This test was developed and its performance characteristics determined by Pathway Genomics. It has not been cleared or approved by the U.S. Food and Drug Administration. If you have any questions about this report or wish to speak with one of Pathway Genomics' genetic counselors, please call (877) 505-7374.



DIET

73 Genetic Markers Tested



Eat a diet lower in fat instead of a low carbohydrate, Mediterranean or other diet.



As someone who has enhanced bitter taste perception, you may not like the taste of certain healthy vegetables, such as broccoli or leafy greens. Try recipes that mask the bitter flavors without adding too many calories.



You are less likely to be lactose intolerant, which means you may consume dairy products and not have gastrointestinal side effects. Choose dairy products that are lower in calories, fat and added sugar.



You have a higher than average genetic risk for elevated LDL (bad) cholesterol. You should limit your saturated fat intake and avoid foods containing trans or hydrogenated fats to help reduce this risk.



As a slow caffeine metabolizer, you may want to limit your caffeine intake to one or two cups of coffee per day, or an equivalent amount of caffeine. This may limit the likelihood of some of the common side effects.



NUTRITIONAL-NEEDS

7 Genetic Markers Tested



You have a genetic variant associated with lower levels of folic acid. Good sources of folate include vegetables, fruits, whole grains, legumes, as well as fortified foods and vitamin supplements. Food sources are recommended as they also provide many additional health-promoting benefits.



You have a genetic variant associated with lower vitamin B-6 levels. Be sure your diet includes foods rich in vitamin B-6, such as dark green leafy vegetables, whole grains, legumes, poultry, fish and eggs.



You have a genetic variant associated with lower vitamin B-12 levels. Be sure your diet includes foods rich in vitamin B-12, such as meat, fish, poultry and milk products. You can also obtain B-12 from fortified foods and vitamin supplements.



EXERCISE

11 Genetic Markers Tested

Your genetics are associated with an enhanced benefit from endurance exercises, such as mid-long distance walking, jogging and bicycling. Weight resistance exercises may be less beneficial.



You have a genetic variant associated with being overweight. You can lower your chances by leading a physically active lifestyle.



You may be more prone to Achilles tendon injuries or Achilles tendinopathy compared to other people. Be sure to stretch and warm up appropriately before exercise.



Exercise may have an enhanced benefit by increasing your HDL (good) cholesterol levels.



METABOLIC-HEALTH

63 Genetic Markers Tested

You have a higher than average genetic likelihood for obesity. There are many health risks associated with obesity and you should take action as soon as possible to reduce your risks.



You have a genetic profile consistent with elevated LDL (bad) cholesterol levels in the borderline high range or above. Regular monitoring of your cholesterol by your physician is recommended.



Your genetic profile shows a higher than average likelihood for elevated blood sugar levels, which are often associated with insulin resistance and can lead to type 2 diabetes. Regular monitoring of your blood sugar by your physician is recommended.



YOUR MATCHING DIET



Matching Diet Type p. 8	LOW FAT DIET
Response To Monounsaturated Fats p. 10	NEUTRAL
Response To Polyunsaturated Fats p. 11	INCREASED BENEFIT

EATING BEHAVIOR TRAITS



Snacking p. 13	TYPICAL
Hunger p. 13	TYPICAL
Satiety - Feeling Full p. 13	TYPICAL
Eating Disinhibition p. 14	LESS LIKELY
Food Desire p. 14	TYPICAL
Sweet Tooth p. 15	TYPICAL

FOOD REACTIONS



Caffeine Metabolism p. 17	SLOW METABOLIZER
Bitter Taste p. 17	TASTER
Sweet Taste p. 18	NOT REPORTED
Lactose Intolerance p. 18	LESS LIKELY
Alcohol Flush p. 19	LESS LIKELY

NUTRITIONAL NEEDS



Vitamin B6 p. 21	OPTIMIZE INTAKE
Vitamin B12 p. 22	OPTIMIZE INTAKE
Folate - Folic Acid p. 22	OPTIMIZE INTAKE
Vitamin A p. 23	INCONCLUSIVE
Vitamin D p. 24	OPTIMIZE INTAKE
Vitamin E p. 24	OPTIMIZE INTAKE

EXERCISE



Endurance Training p. 27	ENHANCED BENEFIT
Strength Training p. 28	LESS BENEFICIAL
Muscle Power p. 28	LESS MUSCLE POWER
Achilles Tendinopathy p. 29	INJURY PRONE
Weight Loss Response To Exercise p. 29	EXERCISE STRONGLY RECOMMENDED
Blood Pressure Response To Exercise p. 30	EXERCISE RECOMMENDED
HDL (Good) Cholesterol Response To Exercise p. 30	ENHANCED BENEFIT
Loss Of Body Fat Response To Exercise p. 30	NORMAL BENEFIT
Insulin Sensitivity Response To Exercise p. 31	ENHANCED BENEFIT

YOUR BODY AND WEIGHT



Obesity Index p. 34	HIGH
Weight Loss-regain p. 34	MORE LIKELY TO GAIN WEIGHT BACK
Metabolism p. 35	NORMAL
Adiponectin Levels p. 35	TYPICAL

METABOLIC HEALTH FACTORS



Elevated LDL Cholesterol p. 37	HIGH
Decreased HDL Cholesterol p. 38	BELOW AVERAGE
Elevated Triglycerides p. 39	AVERAGE
Elevated Blood Sugar p. 40	ABOVE AVERAGE



PERSONALIZE YOUR DIET WITH GENETICS

The way we eat, how our bodies process foods, and our overall health are impacted by our genetics. Scientific studies have shown that genetics can also be important for diet effectiveness. Your results have been calculated to determine the best diet likely to help you optimize your metabolism, lose weight and improve your health.

► YOUR RESULTS ◀



MATCHING DIET TYPE

page:8

LOW FAT DIET



RESPONSE TO
MONOUNSATURATED FATS

page:10

NEUTRAL



RESPONSE TO
POLYUNSATURATED FATS

page:11

INCREASED BENEFIT



DIET

MATCHING DIET TYPE

Your diet has been selected by looking at many genetic variants associated with how people respond to the different macronutrients (proteins, fats and carbohydrates) in their food^{2,3,4,5,6,7}. Your genetic risk profiles discussed in the Metabolic Health Factors section of this report were also evaluated to determine your recommended diet^{8,9}. Together, your genetic results suggest which one of the following diets may be best for you: "Low Fat," "Low Carb," "Mediterranean" or a "Balanced Diet." It is highly recommended to discuss any change in your diet plan with your health care provider.

YOUR DIET RECOMMENDATIONS

- ✓ Eat a diet lower in fat instead of a low carbohydrate, Mediterranean or other diet.
- ✓ As someone who has enhanced bitter taste perception, you may not like the taste of certain healthy vegetables, such as broccoli or leafy greens. Try recipes that mask the bitter flavors without adding too many calories.
- ✓ You are less likely to be lactose intolerant, which means you may consume dairy products and not have gastrointestinal side effects. Choose dairy products that are lower in calories, fat and added sugar.
- ✓ You have a higher than average genetic risk for elevated LDL (bad) cholesterol. You should limit your saturated fat intake and avoid foods containing trans or hydrogenated fats to help reduce this risk.
- ✓ As a slow caffeine metabolizer, you may want to limit your caffeine intake to one or two cups of coffee per day, or an equivalent amount of caffeine. This may limit the likelihood of some of the common side effects.

▶ YOUR RESULT ◀

LOW FAT DIET

Your genotype is associated with weight loss or other health benefits from a diet lower in fats, especially saturated fats.



YOUR RELATED GENES

Gene Tested	Your Genotype	Scientific Strength
PPARG-rs1801282	C/C	★★★★★
FTO-rs9939609	T/A	★★★★★
LIPC-rs1800588	C/C	★★★★★
ADIPOQ-rs17300539	G/G	★★★★★
KCTD10-rs10850219	G/G	★★★★★
MMAB-rs2241201	G/C	★★★★★
APOA2-rs5082	T/T	★★★★★

AND MORE...

LOW CARB

Non-starchy vegetables, high quality proteins and healthy fats

▶ YOUR RESULT ◀

LOW FAT

Lean proteins, fiber-rich vegetables, grains and fruits, and healthy fats

BALANCED

Balance of healthy fats, carbohydrates and proteins

MEDITERRANEAN

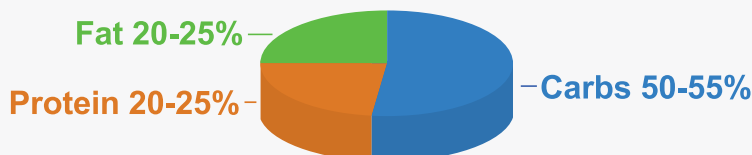
Fish, monounsaturated fats, and low glycemic, high fiber vegetables, fruits, grains and legumes



DIET

LOW FAT DIET

A fat-controlled diet limits fat intake, such as fatty meat, butter-based or creamed dressings and sauces, as well as full-fat milk, cheese and yogurt. This diet focuses on fiber-rich fruits, vegetables and whole-grains, as well as lean protein and low fat dairy foods. Although it's important for general health to limit, or even avoid, high-fat fried foods, pastries, ice cream, and other desserts, it is specifically important to limit these types of foods when participating in a fat-controlled diet plan. Concentrate on strongly colored fruits and vegetables with bold flavors, and focus on consuming whole grains, such as whole-wheat flour, brown rice and oats. For your protein intake, incorporate legumes, fish (and other seafood), and limit your red meat consumption to about 3 ounces or less per day. To maintain the proper amount of dairy in your diet, milk in the liquid form and plain, unflavored yogurt are optimal. Regarding fats and oils, it's best to choose primarily vegetable fats and to minimize your intake of animal fats as well as solid and trans fat, such as stick margarine and coffee whitener.



Low Fat Diet: Key Aspects

Fruits and Vegetables

- Bright colors, bold flavor
- Whole fruit is better than juice.
- Leafy green veggies are optimal.
- Avoid fried vegetables, such as fried potatoes (French fries).
- Limit fruit juice to ½ cup per day (no sugar or sweetener).
- Avoid fruit desserts made with added fat, such as pies and tarts.

Grains and Starchy Vegetables

- At least 3 to 4 servings of grains should come from whole grains.
- Minimize added sugar.
- Avoid grain products that are fried or made with added fat.

Protein Foods

- Eat ¼ to ½ cup or more legumes daily.
- Choose beans prepared without added fat.
- Limit red meat to 3 ounces per day, or less.
- Eat fish or other seafood at least 2 to 3 times per week.
- Remove all visible fat and skin from meat, fish and poultry.
- Prepare meat by baking, broiling, steaming or poaching.
- Avoid frying meat or eggs.
- Limit eggs to 4 per week (poached). Egg whites or egg substitute are a healthy option.

Milk Products

- Choose liquid milk and plain yogurt.
- Choose primarily lower fat varieties (2%) without added sugar.
- Avoid cheese.

Fats and Oils

- Vegetable fats are optimal.
- Minimize animal, solid and trans fats.
- Limit added fat to the equivalent of 3 to 4 teaspoons per day.

General

- Minimize or avoid foods with added sugar, as this is especially important if you are trying to lose weight or control your blood sugar levels, or if your triglyceride levels are elevated.



DIET

TYPES OF FAT IN YOUR DIET

Acting as an important part of any diet and a source of energy, fat provides flavor to your diet, but more importantly, it is a vital element in the absorption of fat-soluble vitamins such as vitamins A, D, E and K. The two major types of fat include saturated and unsaturated (polyunsaturated and monounsaturated) fats. In order for your body to function normally, you need to maintain a consistent and balanced supply of saturated and unsaturated fats. A third type of fats consists of hydrogenated fats, which are processed fats that are not found naturally, such as in margarine and fried fast foods. Hydrogenated fats may also contain trans fatty acids and are generally unhealthy and should be avoided.

SATURATED FAT

- Beef
- Lamb
- Lard
- Milk
- Cream
- Poultry (dark meat)
- Veal
- Pork
- Butter
- Cheeses
- Coconut oil

UNSATURATED FAT

- | | |
|--------------------|-----------------|
| Polyunsaturated | Monounsaturated |
| ➤ Corn oil | ➤ Avocados |
| ➤ Cottonseed oil | ➤ Canola oil |
| ➤ Fish and seafood | ➤ Nuts |
| ➤ Safflower oil | ➤ Olives |
| ➤ Seeds | ➤ Olive oil |
| ➤ Soybean oil | ➤ Peanut oil |
| ➤ Sunflower oil | ➤ Peanuts |

HYDROGENATED FAT

- Margarine (stick)
- Shortening
- Foods containing trans fats
- Most fast foods
- Fried foods



DIET

RESPONSE TO MONOUNSATURATED FATS

Fat is an important part of any diet, and not all fats are bad. Monounsaturated fat is considered a healthy dietary fat found in avocados, olives, peanuts and other nuts, as well as oils, such as olive oil, peanut oil and canola oil. The two possible outcomes for this test are "Increased Benefit" or "Neutral." Having an "Increased Benefit" from monounsaturated fat suggests you could benefit from eating foods containing monounsaturated fats. In general, it is best to minimize saturated and trans fats in your diet.

Genetic variants in two genes, ADIPOQ and PPARG, have been associated with a lower body weight in individuals when more than 13% of their calories come from monounsaturated fats^{6,7}. This would be like a person on an 1800-calorie diet consuming about one to two tablespoons of olive oil and a quarter cup of nuts each day as part of their total caloric intake. While the ADIPOQ study was done in a population of both men and women, the PPARG study was done only in women. There is not enough scientific evidence to support if the PPARG association is also true in men.

▶ YOUR RESULT ◀

NEUTRAL

For people with your genotype, the amount of dietary monounsaturated fat does not affect body weight. However, substituting saturated and trans fats with monounsaturated fats is still recommended, as it has several health benefits.



YOUR RELATED GENES

Gene Tested	Your Genotype	Scientific Strength
PPARG-rs1801282	C/C	★★★★★
ADIPOQ-rs17300539	G/G	★★★★★



DIET
RESPONSE TO POLYUNSATURATED FATS

Polyunsaturated fat is considered a healthy fat and is important for heart and brain function, as well as growth and development. Two types of polyunsaturated fats are omega-3 and omega-6 fats. Good sources of omega-6 fats include corn, cottonseed, safflower, soybean, and sunflower oils, as well as the salad dressings and mayonnaise made from these oils. Additionally, good sources of omega-3 fats include fish and seafood, as well as flaxseed, canola oil, walnuts, hemp seeds, and dark green leafy vegetables.

The two possible outcomes in this report are "Increased Benefit" or "Neutral." Having an "Increased Benefit" from polyunsaturated fat means you should try to eat foods containing polyunsaturated fats. In general, it is best to minimize saturated and trans fats in your diet. One study in women has shown that those with a certain genetic variant in the PPARG gene tend to have a lower body weight when they consume more polyunsaturated fats than saturated fats⁷. This association has not been studied in men.

► YOUR RESULT ◀

INCREASED BENEFIT

People with your genotype who have a diet that includes more polyunsaturated fats, rather than saturated fats, tend to have a lower body weight, compared to those who do not.

YOUR RELATED GENES

Gene Tested	Your Genotype	Scientific Strength
PPARG-rs1801282	C/C	★★★★



EATING BEHAVIORS CAN BE INFLUENCED BY GENES.

There are certain genes that have the potential to impact how we perceive and desire particular foods, and influence our eating behaviors, such as excessive snacking and difficulty feeling full. For example, variants in the ANKK1 and DRD2 genes, which result in a reduced density of dopamine receptors in your brain, have been associated with eating and addictive behaviors^{10,11,12}. This type of information, generated from testing genetic markers in a number of genes, is included in your report, and can be used to understand how to modify your lifestyle and behaviors for optimum wellness.

► YOUR RESULTS ◀

**SNACKING**

page:13

TYPICAL

**HUNGER**

page:13

TYPICAL

**SATIETY - FEELING FULL**

page:13

TYPICAL

**EATING DISINHIBITION**

page:14

LESS LIKELY

**FOOD DESIRE**

page:14

TYPICAL

**SWEET TOOTH**

page:15

TYPICAL



EATING BEHAVIOR TRAITS SNACKING

Snacking can be a healthy or unhealthy behavior. Eating healthy foods in small portions throughout the day can help control hunger cravings and reduce total caloric intake, while snacking on junk food can have negative health effects. Genetic markers associated with snacking behavior include variants in the receptor for leptin, an essential hormone for the regulation of food intake. The possible results in this report are "Typical" and "Increased." If you receive the "Increased" result, you may want to curtail the negative effects of snacking by choosing healthy snacks, eating slowly and reducing the size or calories of snacks. People with the G/G genotype in a leptin receptor (LEPR) genetic marker were more likely to show "Increased" snacking behavior¹³. "Typical" genotypes were not associated with "Increased" snacking behavior in the same study. This association has not been studied in men.

► YOUR RESULT ◀

TYPICAL

Your genotype is not associated with extreme snacking behavior.



YOUR RELATED GENES

Gene Tested	Your Genotype	Scientific Strength
LEPR-rs2025804	A/A	★★★☆☆



EATING BEHAVIOR TRAITS HUNGER



While most of us know the feeling of hunger, some people feel hunger more intensely and more often than others. Susceptibility to hunger can now be partially explained by genetics. A variation in the NMB gene has been associated with increased feelings of hunger¹⁴. When asked about their own eating behaviors on a questionnaire, people with a T/T genotype were more likely to report an "Increased" susceptibility to hunger, while others were likely to have a "Typical" hunger response. This preliminary information is based on a study rated with one star of scientific strength.

► YOUR RESULT ◀

TYPICAL

People with your genotype are more likely to exhibit typical levels of susceptibility to hunger.



YOUR RELATED GENES

Gene Tested	Your Genotype	Scientific Strength
NMB-rs1051168	G/T	★☆☆☆☆



EATING BEHAVIOR TRAITS SATIETY - FEELING FULL

Satiety can be described as the feeling of fullness after you eat. The FTO (fat mass and obesity-associated) gene is known to be an important factor that predisposes a person to a healthy or unhealthy level of body weight¹⁵. The two possible outcomes in this report are "Difficulty in Feeling Full" and "Typical." People who experience "Difficulty in Feeling Full" tend to eat more without feeling satisfied. To help manage this outcome, you could increase the amount of fiber in your diet and balance meals and snacks throughout the day. Examples of foods high in fiber include whole wheat bread, oatmeal, barley, lentils, black beans, artichokes, raspberries, and peas. In a 2008 study, the A/A genotype at rs9939609 in the FTO gene was associated with "Difficulty in Feeling Full"¹⁶. Although this study was done in children, there is preliminary data to support that the association also holds true in adults¹⁷.

► YOUR RESULT ◀

TYPICAL

People with your genotype tend to feel full after a meal.



YOUR RELATED GENES

Gene Tested	Your Genotype	Scientific Strength
FTO-rs9939609	A/T	★★★★★



EATING BEHAVIOR TRAITS

EATING DISINHIBITION

Eating disinhibition describes the tendency to eat more than normal in response to a stimulus, such as the availability of tasty foods that are not common in regular meals. Eating disinhibition can also happen during social gatherings or under emotional stress. In a 2010 study, the T allele of rs1726866 was "More Likely" to be associated with eating disinhibition in women¹⁸. The C/C genotype at the same marker was "Less Likely" to be associated with eating disinhibition. There is not enough scientific evidence yet to support if this association is found in men.



► YOUR RESULT ◀

LESS LIKELY

Your genotype is not associated with an increase in susceptibility for eating disinhibition.



YOUR RELATED GENES

Gene Tested	Your Genotype	Scientific Strength
TAS2R38-rs1726866	C/C	★ ★ ★ ★



EATING BEHAVIOR TRAITS

FOOD DESIRE

Although there is no objective method to quantify someone's feeling of hunger or liking for a particular type of food, behavioral scientists have devised techniques to measure an individual's motivation to consume food and compare it with that of others. This measurement, called the reinforcing value of food¹⁹, describes how much effort an individual is willing to put forth to get access to food. The reinforcing value can be determined through a series of tests in a laboratory setting. In each of those tests, the individual being tested is asked to complete a task in exchange for a small portion of his or her favorite foods. The task of the initial test is easy, so the food is not difficult to win. As the tests continue, the task gets more and more difficult until, at some point, the participant feels that the food is no longer worth the effort and decides to quit. This experiment tells us that early quitters, when compared with late quitters, are low in food reinforcement. Using this technique, a 2007 study¹⁰ identified a genetic component in food reinforcement. Among people who were considered obese, those who had a specific variant (T allele) of the genetic marker rs1800497 had an "Increased" likelihood to make more effort to obtain their favorite foods and eat more of them. In contrast, the C/C genotype was associated with "Typical" levels of food reinforcement.

► YOUR RESULT ◀

TYPICAL

Your genotype is not associated with an increased desire or willingness to put forth additional effort to obtain your favorite foods.



YOUR RELATED GENES

Gene Tested	Your Genotype	Scientific Strength
ANKK1/DRD2-rs1800497	C/C	★ ★ ★ ★



EATING BEHAVIOR TRAITS

SWEET TOOTH

Craving sweet foods is sometimes described as having a "sweet tooth." The possible outcomes in this report are "Increased" or "Typical." If your genotype shows an "Increased" likelihood to eat lots of sweets, try choosing fruit as a healthy sweet alternative to sugary foods or soda. Be sure to follow your diet as some diet plans, such as the low carbohydrate diets, significantly limit the amount of sugar you can eat. Sweet foods can include healthy foods, such as fruits, or unhealthy foods like candy and sweetened beverages. People with the C/T and T/T genotypes showed an "Increased" likelihood to eat more sweets and sugary foods, while people with the C/C genotype were more likely to have a "Typical" intake of sugary foods²⁰.

► YOUR RESULT ◀

TYPICAL

People with your genotype tend to eat an average amount of sugary foods.



YOUR RELATED GENES

Gene Tested	Your Genotype	Scientific Strength
SLC2A2-rs5400	C/C	★★★★



YOUR GENETICS MAY IMPACT HOW YOU RESPOND TO SOME FOODS.

Genetic studies have been reported on some types of food reactions. Our tests draw on the current genetic data for responses to caffeine, bitter foods, sweet foods, milk products and alcohol. A summary of your results is provided below.

► YOUR RESULTS ◀

[CAFFEINE METABOLISM](#)*page:17*

SLOW METABOLIZER

[BITTER TASTE](#)*page:17*

TASTER

[SWEET TASTE](#)*page:18*

NOT REPORTED

[LACTOSE INTOLERANCE](#)*page:18*

LESS LIKELY

[ALCOHOL FLUSH](#)*page:19*

LESS LIKELY





FOOD REACTIONS

CAFFEINE METABOLISM



Caffeine is one of the most widely consumed stimulants in the world, and it is found in the leaves and seeds of many plants. It is also produced artificially and added to some foods. Caffeine is found in tea, coffee, chocolate, many soft drinks and energy drinks, as well as in some pain relievers and other over-the-counter medications. Caffeine is metabolized by a liver enzyme, which is encoded by the CYP1A2 gene. Variation at a marker in the CYP1A2 gene results in different levels of enzyme activity, and thus, different metabolism rates for caffeine^{21,22,23}. Therefore, the two possible genetic results in this report are "Fast Metabolizer" and "Slow Metabolizer." If you are a "Slow Metabolizer," then caffeine may have longer lasting stimulant effects for you. In addition to genetics, your body's ability to metabolize caffeine also depends on other lifestyle factors^{24,25}. For example, how much coffee you drink, whether you smoke or whether you take hormonal birth control, may also affect your ability to metabolize caffeine. Because these and other lifestyle factors may both increase or decrease your caffeine metabolism, the most sensible advice is to make lifestyle choices that have the maximum benefit for your overall health.

▶ YOUR RESULT ◀

SLOW METABOLIZER

You are likely to slowly metabolize caffeine. It is suggested that you keep your total caffeine intake to less than 200mg per day, which is about one to two cups of coffee per day.



YOUR RELATED GENES

Gene Tested	Your Genotype	Scientific Strength
CYP1A2-rs762551	A/C	★★★☆☆



FOOD REACTIONS

BITTER TASTE

People taste things differently. Variations in the TAS2R38 gene are associated with different levels of sensitivity to a chemical called PTC²⁶, which produces a strong bitter taste. The possible results for bitter taste are "Taster," "Non-Taster," or "Inconclusive." A person described as a "Taster" may be more sensitive to bitter flavors found in foods, such as grapefruit, coffee, dark chocolate and cruciferous vegetables, such as Brussels sprouts, cabbage and kale. Being a "Taster" does not mean you do not enjoy these foods, but you may sense a stronger bitter taste compared to a "Non-Taster." In addition, tasters may need to watch their salt intake, because they may have an increased preference for salty foods, which mask the bitterness²⁷. A genetic result of "Inconclusive" means that there is not enough scientific evidence for how your genotype is associated with bitter taste sensitivity.



▶ YOUR RESULT ◀

TASTER

You are likely to have a high sensitivity to bitter taste.



YOUR RELATED GENES

Gene Tested	Your Genotype	Scientific Strength
TAS2R38-rs713598	C/C	★★★★★
TAS2R38-rs1726866	C/C	★★★★★



FOOD REACTIONS

SWEET TASTE

Sweet is one of the most basic tastes we can experience, and is usually found in sugar and sugary foods. The sensation of sweet taste is triggered to the brain from the taste buds. There are receptors on your tongue that are programmed by your genes to determine how you taste sweetness. A 2009 study showed that genetic variants found in the sweet taste receptors can result in "Typical" or "Decreased" sensitivity to the sweet taste of sugar²⁸. People with "Decreased" sensitivity may prefer foods with more sugar since they are less likely to taste sweetness in foods that are low sugar.



► YOUR RESULT ◀

NOT REPORTED

We are unable to report this trait at this time.



YOUR RELATED GENES

Gene Tested	Your Genotype	Scientific Strength
TAS1R3-rs35744813	-/-	★★★☆☆



FOOD REACTIONS

LACTOSE INTOLERANCE



Lactose intolerance is the inability to digest lactose, the sugar found in milk and milk products. This condition is caused by the lack of an enzyme called lactase. The rs4988235 variant lies close to the lactase (LCT) gene, in the MCM6 gene, and has been shown to regulate lactase levels^{29,30}. If you are lactose intolerant you should make sure that you are getting enough calcium from non-dairy or lactose-free sources. On the other hand, if you are not lactose intolerant, be aware that dairy products can be high in calories, fat, or both. You need to watch your intake accordingly or select low fat dairy products. People with a C/C genotype at rs4988235 are "More Likely" to be lactose intolerant, while people with other genotypes are "Less Likely"³¹. This variant has been found to be associated with lactose intolerance in Caucasians, while other variants might play an important role in other ethnicities, including Africans and Asians.

► YOUR RESULT ◀

LESS LIKELY

People with your genotype are less likely to be lactose intolerant.



YOUR RELATED GENES

Gene Tested	Your Genotype	Scientific Strength
MCM6-rs4988235	T/C	★★★☆☆



FOOD REACTIONS ALCOHOL FLUSH

Drinking alcoholic beverages is a relaxing or social activity for many, but for some it is exceedingly unpleasant due to their body's adverse reaction to alcohol. One such reaction is called alcohol flush, in which drinking even small amounts of alcohol causes a person's face to flush red and in some cases feel warm and itchy. People who flush may also experience other unpleasant symptoms, such as rapid heartbeat, nausea, or dizziness in response to alcohol. Alcohol flush is largely attributed to genetic variation in the ALDH2 gene, which encodes an enzyme critical for proper alcohol metabolism. Those who carry the inactive version of this gene are much "More Likely" to flush and experience other negative responses to alcohol^{32,33}, while people with other genotypes are "Less Likely" to flush. Perhaps not surprisingly, this variant is also associated with overall reduced consumption of alcohol³⁴. In most cases, avoiding alcohol is the best remedy for those who experience alcohol flush.

► YOUR RESULT ◀

LESS LIKELY

People with your genotype are less likely to experience alcohol flush.



YOUR RELATED GENES

Gene Tested	Your Genotype	Scientific Strength
ALDH2-rs671	G/G	★★★★



VITAMINS AND NUTRIENTS ARE AN IMPORTANT PART OF OUR HEALTH.

There are genetic markers associated with being predisposed to lower levels of certain nutrients, which means you may want to make certain your diet has enough of the foods that contain these nutrients. Ensuring you consume the right amount of vitamins and nutrients from your diet is an important part of your health plan. The recommended daily allowances (RDA) for vitamins and nutrients in this section are based on guidance from the Institute of Medicine of the National Academies (IOM). For more information regarding RDAs, visit www.iom.edu.



► YOUR RESULTS ◀

**VITAMIN B6**

page:21

OPTIMIZE INTAKE

**VITAMIN B12**

page:22

OPTIMIZE INTAKE

**FOLATE - FOLIC ACID**

page:22

OPTIMIZE INTAKE

**VITAMIN A**

page:23

INCONCLUSIVE

**VITAMIN D**

page:24

OPTIMIZE INTAKE

**VITAMIN E**

page:24

OPTIMIZE INTAKE



YOUR NUTRITION RECOMMENDATIONS

- ✓ You have a genetic variant associated with lower levels of folic acid. Good sources of folate include vegetables, fruits, whole grains, legumes, as well as fortified foods and vitamin supplements. Food sources are recommended as they also provide many additional health-promoting benefits.
- ✓ You have a genetic variant associated with lower vitamin B-6 levels. Be sure your diet includes foods rich in vitamin B-6, such as dark green leafy vegetables, whole grains, legumes, poultry, fish and eggs.
- ✓ You have a genetic variant associated with lower vitamin B-12 levels. Be sure your diet includes foods rich in vitamin B-12, such as meat, fish, poultry and milk products. You can also obtain B-12 from fortified foods and vitamin supplements.



NUTRITIONAL NEEDS VITAMIN B6

Vitamin B-6, also called pyridoxine, helps your body's neurological system to function properly, promotes red blood cell health, and is involved in sugar metabolism ("<http://ods.od.nih.gov/factsheets/vitaminb6/>"). Vitamin B-6 is found naturally in many foods, including beans, whole grains, meat, eggs and fish, as well as in fortified sources like breakfast cereals. Most people receive sufficient amounts of vitamin B-6 from a healthy diet, and B-6 deficiency is rare in the United States.

The genetic marker rs4654748 in the NBPF3 gene (near the ALPL gene) has been found in multiple studies to be associated with reduced levels of B-6, possibly due to faster than normal clearance of this vitamin from the bloodstream^{35,36}. Individuals with a C/C or C/T genotype were associated with lower levels of B-6 than those with the T/T genotype. Therefore, if your genotype is C/C or C/T, you will get a result of "Optimize Intake." If your genotype is T/T, it is suggested that you "Stay Balanced" and maintain a healthy diet. The studies we report observed associations between vitamin levels and particular genotypes; however, that does not mean that your levels are out of balance. You should ensure that you are eating a healthy diet and discuss this result with your physician. The recommended intake of vitamin B-6 for most adults is 1.3 to 1.7 milligrams per day.

► YOUR RESULT ◀

OPTIMIZE INTAKE

People with your genotype are more likely to have lower blood levels of vitamin B-6. You may optimize your intake of vitamin B-6 by paying attention to your diet and eating foods rich in vitamin B-6.



YOUR RELATED GENES

Gene Tested	Your Genotype	Scientific Strength
NBPF3-rs4654748	C/T	★★★★



NUTRITIONAL NEEDS

VITAMIN B12

Vitamin B-12 plays an important role in how your brain and nervous system function. It helps to keep red blood cells healthy and is a critical component for synthesis and regulation of your DNA³⁷. Vitamin B-12 is found naturally in foods of animal origin including meat, fish, poultry, eggs and milk products. A healthy diet will typically provide sufficient B-12, although vegetarians, vegans, older people, and those with problems absorbing B-12 due to digestive system disorders may be deficient. Symptoms of vitamin B-12 deficiency can vary, but may include fatigue, weakness, bloating, or numbness and tingling in the hands and feet. The recommended intake for adults is 2.4 micrograms per day.

Multiple genetic studies have identified a marker in the gene FUT2 as being associated with lower levels of B-12 in the blood^{36,38,35}. This effect may be due to reduced absorption of B-12 in the gut³⁶. People with G/G or A/G genotypes are recommended to "Optimize Intake" because they may have lower levels of B-12. Eating B-12-fortified cereals can promote healthy levels of B-12, especially for those over the age of 50. People with the A/A genotype should "Stay Balanced" and maintain a healthy diet. The studies we report observed associations between vitamin B-12 levels and particular genotypes; however, that does not mean that your levels are out of balance. You should ensure that you are eating a healthy diet and discuss this result with your physician.

▶ YOUR RESULT ◀

OPTIMIZE INTAKE

People with your genotype are more likely to have lower blood levels of vitamin B12. You may optimize your intake of vitamin B12 by paying attention to your diet and eating foods rich in vitamin B12.



YOUR RELATED GENES

Gene Tested	Your Genotype	Scientific Strength
FUT2-rs602662	G/G	★★★★



NUTRITIONAL NEEDS

FOLATE - FOLIC ACID

Folate is found in many foods, such as green leafy vegetables like chard or kale, as well as beans, lentils, fruits and fortified grains. This nutrient plays a role in protein metabolism, as well as DNA repair³⁹. Folate can lower the blood level of homocysteine, a substance linked to cardiovascular disease at high levels⁴⁰. Diets rich in folate have been associated with reduced risk of cardiovascular disease⁴¹. Folate is particularly important early in pregnancy for preventing some birth defects³⁹. For this reason, pregnant women or women intending to become pregnant are advised an elevated recommended daily intake of 600 micrograms of folate. The recommended intake of folate for most adults is 400 micrograms per day.

A relatively common variant in the MTHFR gene, known as C677T (rs1801133), has been associated with lowered folate and elevated homocysteine levels in the blood⁴⁰. Hence, people with a T/T or C/T genotype should "Optimize Intake" of folate. People with the C/C genotype should "Stay Balanced" and maintain a healthy diet. The studies we report observed associations between vitamin levels and particular genotypes; however, that does not mean that your levels are out of balance. You should ensure that you are eating a healthy diet and discuss this result with your physician.

▶ YOUR RESULT ◀

OPTIMIZE INTAKE

People with your genotype are more likely to have lower blood levels of folate and higher blood levels of homocysteine. Foods rich in folic acid are recommended for you.



YOUR RELATED GENES

Gene Tested	Your Genotype	Scientific Strength
MTHFR-rs1801133	C/T	★★★★



NUTRITIONAL NEEDS VITAMIN A

Vitamin A is a nutrient that describes a number of related compounds, including retinol, retinal, and retinoic acid. Vitamin A is critical for numerous functions in the body, including healthy vision, immune system action, bone growth, reproduction, and the proper regulation of gene expression^{42,43,44,45}. The recommended intake of vitamin A for most adults is 700 to 900 micrograms per day.

Much of the vitamin A found in your body is derived from beta-carotene, a nutrient found in some plants and foods, such as pumpkin, carrots, sweet potatoes and spinach. A genetic study has found that vitamin A conversion from beta-carotene is impaired in women carrying variants of the BCMO1 gene⁴⁶. This association has not been studied in men.

Those with a result of "Optimize Intake" may bypass this effect by consuming adequate amounts of preformed vitamin A, which can be found in fortified milk and breakfast cereals, as well as in multivitamins containing retinyl palmitate or retinyl acetate^{47,48}. People who receive a "Stay Balanced" outcome should maintain a healthy diet. An additional outcome in this report is "Inconclusive," which means that there was not enough scientific evidence to determine how your genotype relates to the efficiency of converting beta-carotene to vitamin A. The study we report observed associations between vitamin A levels and particular genotypes. However, that does not mean that your levels are out of balance. You should eat a healthy diet and speak with your physician before making specific changes to your dietary regimen.



► YOUR RESULT ◀

INCONCLUSIVE

There is not enough scientific evidence to determine how your genotype relates to efficiency in converting beta-carotene into vitamin A.



YOUR RELATED GENES

Gene Tested	Your Genotype	Scientific Strength
BCMO1-rs12934922	T/T	★ ★ ★ ★
BCMO1-rs7501331	C/C	★ ★ ★ ★



NUTRITIONAL NEEDS

VITAMIN D

Vitamin D is important for the absorption and utilization of calcium, which is beneficial for maintaining good bone health⁴⁹. Exposure to sunlight is an important determinant of a person's vitamin D level, since there are few natural dietary sources of vitamin D. While sunscreen use blocks skin production of vitamin D, excessive sun exposure is a risk factor for skin cancer and related conditions, and is not recommended. Dietary sources of vitamin D include some fatty fish, fish liver oils, and milk or cereals fortified with vitamin D. The recommended intake of vitamin D for most adults is 600 IUs per day. About 115 IUs of vitamin D is found in one cup of vitamin D-fortified, non-fat, fluid milk.

Multiple genetic studies have identified a variant in the GC gene that codes for the vitamin D-binding protein that is associated with decreased blood levels of 25-hydroxyvitamin D, which is the major circulating form of vitamin D^{50,51}. People with the G/G or G/T genotype at this genetic marker may be susceptible to lower blood vitamin D levels due to reduced ability to transport vitamin D in the body. Therefore, these people may need to "Optimize Intake" of vitamin D. People with a T/T genotype are advised to "Stay Balanced" and maintain a healthy diet. The studies we report observed associations between vitamin D levels and certain genotypes; however, that does not mean that your levels are out of balance. You should eat a healthy diet and speak with your physician before making specific changes to your dietary regimen.

▶ YOUR RESULT ◀

OPTIMIZE INTAKE

People with your genotype are more likely to have lower blood levels of vitamin D. You may optimize your levels of vitamin D through exposure to the sun as well as dietary sources.



YOUR RELATED GENES

Gene Tested	Your Genotype	Scientific Strength
GC-rs2282679	G/T	★★★★



NUTRITIONAL NEEDS

VITAMIN E

Vitamin E is a group of eight antioxidant molecules, of which alpha-tocopherol is the most abundant in the body. Vitamin E functions to promote a strong immune system and regulates other metabolic processes^{52,53}. The recommended intake of vitamin E for most adults is 15 milligrams per day. Note that synthetic varieties of vitamin E found in some fortified foods and supplements are less biologically active. Sources of naturally-occurring vitamin E in foods are vegetable oils, green leafy vegetables, eggs and nuts.

One study of 3,891 individuals found that people with the A/A or A/C genotypes at an intergenic marker, rs12272004, near the APOA5 gene, had increased plasma levels of alpha-tocopherol⁵⁴. Therefore, they should "Stay Balanced" and maintain a healthy diet. This is good news since increased vitamin E levels are associated with decreased frailty and disability in old age⁵⁵. People with the C/C genotype were not associated with increased levels of alpha-tocopherol, and hence they would need to "Optimize Intake" of vitamin E through the increased intake of foods rich in vitamin E. Keep in mind, however, that most adults normally do not take in adequate amounts of vitamin E on a daily basis⁵⁶, so keeping an eye on your vitamin E intake is good advice for anyone. The studies we report observed associations between vitamin E levels and certain genotypes; however, that does not mean that your levels are out of balance. You should eat a healthy diet and speak with your physician before making specific changes to your dietary regimen.

▶ YOUR RESULT ◀

OPTIMIZE INTAKE

Your genotype is not associated with increased alpha-tocopherol levels, which is one compound that makes up vitamin E. You may optimize your intake of vitamin E by eating foods rich in this nutrient.



YOUR RELATED GENES

Gene Tested	Your Genotype	Scientific Strength
INTERGENIC-rs12272004	C/C	★★★★



NUTRIENTS, WEIGHT MANAGEMENT AND GENETICS

New studies continue to emerge that demonstrate links between nutrients and genetics that show benefits in health and weight loss. Some of the benefits that scientists observe in relation to genes are listed below.

Important: The genes and associated benefits listed below are not part of your genetic test. The content on this page is informational.



NUTRIENT/FOOD	POTENTIAL HEALTH & WEIGHT LOSS BENEFITS	ASSOCIATED GENE(S)
Resveratrol	Weight Loss, Decrease Weight Gain	SIRT1, PPARA, PPARG, ER
Polyphenols (tea)	Decrease Weight Gain	PPARG
Conjugated Linoleic Acid (CLA)	Fat Burning, Weight Loss	PPARA, PPARG
Ispoprenols (farnesol)	Weight Loss	PPARA, PPARG
Abietic Acid	Weight Loss	PPARG
Capsaicin (Hot Pepper)	Weight Loss, Anti-inflammatory	PPARG
Phytol (Chlorophyll)	Weight Loss	PPARA
Auraptene (Citrus)	Weight Loss	PPARA, PPARG
Isohumulone (Hops)	Weight Loss	PPARA, PPARG
Guggulsterone (Gugle)	Weight Loss	Farnesoid X Receptor
Soy/Genistein	Weight Loss	Steroid Receptors: Estrogen, Androgen, Progesterone
Diosgenin	Weight Loss	Steroid Receptors: Progesterone
Ginseng	Weight Loss	Steroid Receptors: Estrogen
Hyperforin	Weight Loss	Pregnane X Receptor
Alpha-lipoic Acid	Reduction of Overeating	AMPK Inhibitor
Anthocyanins (Pigment)	Overall Health Benefit	Adiponectin
Licorice LFO (Polyphenols)	Overall Health Benefit	FA synthase
Pomegranate Extract (Lenolenic Acid)	Overall Health Benefit	b-oxidation/PPARA



EXERCISE HAS LONG BEEN SHOWN TO PROVIDE MANY HEALTH BENEFITS.

Studies have shown a link between genetics and exercise, and how people respond to exercise for weight loss and other health benefits. A few examples of this link include the ACE and ACTN3 genes and the association with elite athlete status, as well as the LPL gene and its connection to the loss of body fat in response to exercise. A summary of your results is listed below.

► YOUR RESULTS ◀



ENDURANCE TRAINING

page:27

ENHANCED BENEFIT



STRENGTH TRAINING

page:28

LESS BENEFICIAL



MUSCLE POWER

page:28

LESS MUSCLE POWER



ACHILLES TENDINOPATHY

page:29

INJURY PRONE



WEIGHT LOSS RESPONSE TO EXERCISE

page:29

EXERCISE STRONGLY RECOMMENDED



BLOOD PRESSURE RESPONSE TO EXERCISE

page:30

EXERCISE RECOMMENDED



HDL (GOOD) CHOLESTEROL RESPONSE TO EXERCISE

page:30

ENHANCED BENEFIT



LOSS OF BODY FAT RESPONSE TO EXERCISE

page:30

NORMAL BENEFIT



INSULIN SENSITIVITY RESPONSE TO EXERCISE

page:31

ENHANCED BENEFIT



YOUR EXERCISE RECOMMENDATIONS

- ✓ Your genetics are associated with an enhanced benefit from endurance exercises, such as mid-long distance walking, jogging and bicycling. Weight resistance exercises may be less beneficial.
- ✓ You have a genetic variant associated with being overweight. You can lower your chances by leading a physically active lifestyle.
- ✓ You may be more prone to Achilles tendon injuries or Achilles tendinopathy compared to other people. Be sure to stretch and warm up appropriately before exercise.
- ✓ Exercise may have an enhanced benefit by increasing your HDL (good) cholesterol levels.



EXERCISE

ENDURANCE TRAINING

Endurance training is generally used to describe exercise that is done for a longer duration with moderate intensity. Most people can benefit from a combination of endurance, high intensity and resistance exercises. Some people have genetic markers that are associated with "Enhanced Benefit" from endurance training, while others will gain "Normal Benefit." The studies that were used to calculate your result tested responses to a 20-week endurance training program^{57,58,59}. This result can be used to help tailor your exercise routine. Always consult your physician or health care provider before beginning any exercise program.

► YOUR RESULT ◀

ENHANCED BENEFIT

Endurance training may provide enhanced health benefits to people with your genotype.



YOUR RELATED GENES

Gene Tested	Your Genotype	Scientific Strength
LPL-rs328	C/C	★★★★
PPARD-rs2016520	A/G	★★★★
LIPC-rs1800588	C/C	★★★★



EXERCISE

STRENGTH TRAINING

Strength training can be described as exercises that incorporate the use of opposing forces to build muscle. The possible outcomes in this report are "Beneficial" and "Less Beneficial." In a small study of young adult men, those with the C/G or C/C genotypes at rs7566605 were more likely to experience increased fat volume after participating in 12 weeks of resistance training, and thus strength training was "Less Beneficial"⁶⁰. This association has not been identified in women.

▶ YOUR RESULT ◀

LESS BENEFICIAL

Strength training may be less beneficial to people with your genotype, as there is a chance for a small gain in fat volume. Moderate strength training is still recommended for overall health benefits.



YOUR RELATED GENES

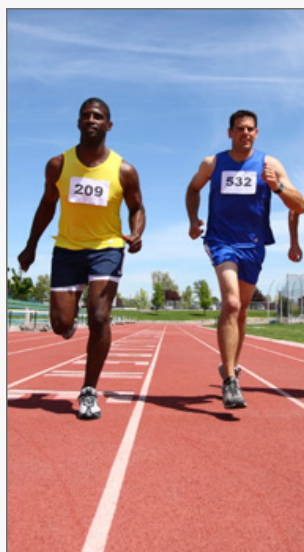
Gene Tested	Your Genotype	Scientific Strength
INSIG2-rs7566605	C/C	★★★☆☆



EXERCISE

MUSCLE POWER

Do you have a genetic variant that is found in nearly all sprinters qualified for top-level competitions like the Olympic Games? The so-called "sprinter gene" refers to the functional version of the ACTN3 gene, which contains information for making a protein found in fast-twitch muscle fibers⁶¹. The protein and the fast-twitch muscle fibers are important in generating explosive bursts of force. This is why the functional version of ACTN3 is also seen with high frequencies in other elite power-oriented athletes, such as weightlifters⁶². About 80% of people have at least one functional copy of the ACTN3 gene, which can lead to enhanced muscle power. However, having functional ACTN3 is only one of a myriad of genetic and non-genetic factors that contribute to the success of elite athletes. The remaining 20% of people, who do not have a functional copy of ACTN3, may have less muscle power and are less likely to be world-class sprinters or weightlifters, but their chance to excel may not be affected in sports that require other types of body performance, such as endurance and nimbleness.



▶ YOUR RESULT ◀

LESS MUSCLE POWER

Your genotype is rare in elite power athletes, such as sprinters and weightlifters. However, this gene is only one of many factors determining a person's athletic potential, and it may have limited or no effect on performance in the sport of your choice.



YOUR RELATED GENES

Gene Tested	Your Genotype	Scientific Strength
ACTN3-rs1815739	T/T	★★★★★



EXERCISE

ACHILLES TENDINOPATHY

The Achilles tendon connects your calf muscles to your heel bone. Tendinopathy describes either the inflammation or tiny tears to the tendon. People who play sports and runners who place stress on the Achilles tendon have the greatest likelihood of tendinopathy. If you have a G/G genotype you may be more "Injury-Prone," while other genotypes have a "Typical" likelihood of developing Achilles tendinopathy. In a small study, people with the G/G genotype at rs679620 (MMP3) had 2.5 times more chance of developing Achilles tendinopathy compared to other genotypes⁶³.



▶ YOUR RESULT ◀

INJURY PRONE

Your genotype is associated with an increased likelihood of Achilles tendinopathy.



YOUR RELATED GENES

Gene Tested	Your Genotype	Scientific Strength
MMP3-rs679620	G/G	★★★☆☆



EXERCISE

WEIGHT LOSS RESPONSE TO EXERCISE



Exercise is a large part of many weight loss plans, as it is a crucial tool for weight control for everyone. The possible outcomes in this report are "Exercise Strongly Recommended" and "Exercise Recommended." If your report shows "Exercise Strongly Recommended," your genotype has been shown to be associated with a tendency to be overweight, and exercise is strongly recommended for you. If your report shows "Exercise Recommended," you have one less risk factor for being overweight. However, this should not be taken as one less reason to exercise, because being physically active is beneficial to all people, regardless of genetic makeup. People with the "Exercise Strongly Recommended" outcome contain a specific variant (T allele) in the genetic marker rs1121890 of the FTO gene, which has been shown to be associated with increased body mass index (BMI) and waistline^{64,65}. However, a large study showed that people who have this variant could reduce their propensity to increased BMI by being physically active⁶⁵.

▶ YOUR RESULT ◀

EXERCISE STRONGLY RECOMMENDED

You have a genetic variant that is associated with being overweight or obese. Regular exercise and an active lifestyle are strongly recommended.



YOUR RELATED GENES

Gene Tested	Your Genotype	Scientific Strength
FTO-rs1121890	C/T	★★★★★



EXERCISE

BLOOD PRESSURE RESPONSE TO EXERCISE

High blood pressure, also known as hypertension, is a common health issue. It has been estimated that a majority of people will have hypertension at some time in their lives. A genetic variant in the EDN1 gene has been shown to increase the likelihood of hypertension in people who were low in cardiorespiratory fitness, which refers to the ability of the heart and lungs to provide muscles with oxygen for physical activity⁶⁶. This genetic variant did not show an effect in people who were high in cardiorespiratory fitness. If you have this variant, your result is "Exercise Strongly Recommended," since you may need to exercise to reduce your chances of hypertension. If you do not have the variant, your result is "Exercise Recommended," since exercise is still the right decision to manage other risk factors for high blood pressure you may have.

▶ YOUR RESULT ◀

EXERCISE RECOMMENDED

Your genotype is not associated with an increased likelihood of elevated blood pressure, but exercise can still help you to maintain overall health.



YOUR RELATED GENES

Gene Tested	Your Genotype	Scientific Strength
EDN1-rs5370	G/G	★★★★★



EXERCISE

HDL (GOOD) CHOLESTEROL RESPONSE TO EXERCISE

One of the health benefits of exercise can be the improvement of your cholesterol. HDL cholesterol is known as the good cholesterol, and having more HDL is beneficial. Most people can improve their HDL levels by exercising. In the Heritage Family Study, people with the A/G and G/G genotypes were more likely to have an "Enhanced Benefit" in their HDL levels by exercising⁵⁹. People with "Normal Benefit" may also increase their HDL levels by exercising, but may not experience an enhanced effect.

▶ YOUR RESULT ◀

ENHANCED BENEFIT

Your genotype is associated with an enhanced increase in HDL (good) cholesterol in response to a 20-week endurance training program.



YOUR RELATED GENES

Gene Tested	Your Genotype	Scientific Strength
PPARD-rs2016520	A/G	★★★★★



EXERCISE

LOSS OF BODY FAT RESPONSE TO EXERCISE



Many people exercise to lose body fat. If you have a specific genotype in the gene LPL, you may have an "Enhanced Benefit" from exercise to lose body fat⁵⁷. If you have the "Normal Benefit" genotype, you will still experience fat reduction if you exercise, but it might take more effort. The study was based on women who participated in a 20-week endurance training program. This association has not been identified in men.

▶ YOUR RESULT ◀

NORMAL BENEFIT

Your genotype is associated with a typical reduction in body fat mass and percent of body fat in response to exercise.



YOUR RELATED GENES

Gene Tested	Your Genotype	Scientific Strength
LPL-rs328	C/C	★★★★★



EXERCISE

INSULIN SENSITIVITY RESPONSE TO EXERCISE

Insulin sensitivity is a good thing. Insulin in your body helps control your response to glucose, commonly known as sugar. Having an increased insulin sensitivity means that the body has a better ability to process sugar. The opposite of insulin sensitivity is called insulin resistance, which is linked to obesity and type 2 diabetes. Most people have a beneficial response to exercise, resulting in increased insulin sensitivity. According to a study, people with C/C or C/T genotypes, at a marker in the LIPC gene, showed an "Enhanced Benefit," compared to those with a T/T genotype⁵⁸. Although people with T/T genotypes are likely to gain "Less Benefit" in insulin sensitivity from exercise training, exercise remains important in many other aspects of their health.

► YOUR RESULT ◀

ENHANCED BENEFIT

Your genotype is associated with enhanced insulin sensitivity in response to exercise.



YOUR RELATED GENES

Gene Tested	Your Genotype	Scientific Strength
LIPC-rs1800588	C/C	★★★★



YOUR WEIGHT CAN BE INFLUENCED BY MANY GENES.

Your report includes how your genes may relate to your metabolism, if you are likely to maintain weight loss, as well as your predisposition for obesity. A summary of your results is provided below.

► YOUR RESULTS ◀

OBESITY INDEX

page:34

HIGH

WEIGHT LOSS-REGAIN

page:34

MORE LIKELY TO
GAIN WEIGHT BACKMETABOLISM

page:35

NORMAL

ADIPONECTIN LEVELS

page:35

TYPICAL



YOUR BODY AND WEIGHT
YOUR ACTUAL WEIGHT (BMI)



Actual Weight

Weight: 184 lbs Height: 6' 1"

Normal

YOUR
BMI
body mass index

24.3

Category	BMI range - kg/m2
Underweight	Less than 18.5
Normal	from 18.5 to 24.9
Overweight	from 25 to 29.9
Obese	from 30 to 34.9
Clinically Obese	from 35 to 39.9
Extremely Obese	40 or greater

Body mass index (BMI) is a measure of body fat based on height and weight that applies to adult men and women. BMI is usually represented in kg/m2. Your BMI was calculated using your survey responses for weight and height. If your BMI is not listed here, you may not have completed those responses in the survey. Your actual weight is a result of a combination of factors including lifestyle, environment and genetics. Your Obesity Index result is a measure of your likelihood, based on genetics, to have a BMI over 35 (clinically or extremely obese). Since your weight is affected by many factors, it is possible for your Obesity Index result to be very different than your actual weight. The important point is that the genetics of obesity do not lead to an inevitable outcome. Many people have a choice of managing lifestyle to counteract genetics. For example, some people that are of normal weight BMI can have an Obesity Index of above average or high. This example is commonly seen in someone who is controlling diet, nutrition, eating behaviors and/or exercise to manage their body weight. The opposite can also be true. Some people who have an actual BMI in the obese categories can have an Obesity Index of average, below average or low. This case can sometimes be explained by lifestyle choices, environment or other health factors that have led a person to become obese without having the genetics associated to obesity.





YOUR BODY AND WEIGHT OBESITY INDEX

Your Obesity Index is determined from a proprietary algorithm that includes over 30 markers in genes known to be involved in obesity, metabolism and eating behaviors. There are five possible outcomes of this test: "Low," "Below Average," "Average," "Above Average" and "High." A "High" outcome does not mean that you are obese, it only means that you have a high genetic likelihood for a high BMI.

Obesity is influenced by both genetic and environmental factors. Approximately 40 to 70% of an individual's susceptibility to obesity is inherited¹. When someone reaches a BMI of 30 to 35 (clinically obese) or above 40 (morbidly obese), genetic factors with strong effects are likely to be involved.

A person's propensity for obesity could involve variants in genes that control brain signals, stomach and pancreatic hormones, and genes that tell us when to eat and when to stop eating. For example, the gene MC4R is expressed in the brain's hunger center, and when functioning normally, it tells the body when to stop eating. Genetic variants in MC4R have been shown to cause monogenic and morbid obesity. Other genes in this signaling pathway that regulate eating include BDNF, INSR, LEPR, NMB, NPY2R and POMC. Alternatively, variants in GAD2, NPY, AGRP, HTR2A, GHSR and DRD2 tend to stimulate overeating^{67,68}.

Apart from the brain-gut connection, genes that control the behavior of fat cells (FTO, adiponectin) and cholesterol metabolism (INSIG2) can be defective, and genetic variants in these genes have been associated with morbid obesity. In addition, genes associated with addictive behaviors, such as overeating, are also linked to obesity. Most notably, variants in the dopamine receptor pathway (ANKK1, DRD2) have been associated with addictive behavior, overeating and ADHD^{69,11}. Dopamine and other neurotransmitter pathways are the targets of many anti-obesity drugs⁷⁰. Finally, genes associated with maintaining a normal daily rhythm may contribute to a person's propensity toward obesity. Serotonin and genes such as CLOCK control circadian light/dark cycles, or daily sleep/wake rhythms^{71,72}. Alarming, shift workers have the highest likelihood of developing obesity and metabolic syndrome because of their disruptive work schedules and sleeping and eating patterns.

► YOUR RESULT ◀

HIGH

Your genetic profile indicates a high predisposition for being overweight.



YOUR RELATED GENES

Gene Tested	Your Genotype	Scientific Strength
LEP-rs7799039	G/G	★★★★
COMT-rs4680	A/A	★★★★
INSIG2-rs7566605	C/C	★★★★
ANKK1/DRD2-rs1800497	C/C	★★★★
DRD2-rs6277	T/T	★★★★
HTR2A-rs6311	T/C	★★★★
NPY2R-rs1047214	T/C	★★★★
FTO-rs9939609	A/T	★★★★
MC4R-rs17782313	T/T	★★★★

AND MORE...



YOUR BODY AND WEIGHT WEIGHT LOSS-REGAIN

There are genes associated with the tendency to gain weight back after a person loses weight, and there are genes that protect a person from weight regain. In one study, people with the G/G genotype were "More Likely to Gain Weight Back," while people with other genotypes were more likely to show "Weight Loss Maintained"⁷³. It is best after losing weight to maintain a healthy diet, exercise and nutrition plan to keep the extra pounds off.



► YOUR RESULT ◀

MORE LIKELY TO GAIN WEIGHT BACK

You may have difficulty keeping weight off after losing weight.



YOUR RELATED GENES

Gene Tested	Your Genotype	Scientific Strength
ADIPOQ-rs17300539	G/G	★★★★



YOUR BODY AND WEIGHT METABOLISM

Metabolism describes the way your body burns energy (calories) and tends to have a strong correlation to managing your weight. Resting metabolism is how your body burns energy while at rest. People with a "Fast" metabolism can sometimes eat more food with little exercise and not gain weight. People with a "Normal" metabolism tend to require average amounts of food intake and average amounts of exercise to maintain weight. A genetic marker in the leptin receptor (LEPR) is associated with interactions in your brain that trigger how and when you burn energy. People with a C/C genotype tend to have an increased resting metabolic rate, or "Fast" metabolism, while people with C/G or G/G genotypes are not associated with an increased resting metabolic rate; therefore, they have a "Normal" metabolism⁷⁴. However, having this genetic variant is only one of many other genetic and non-genetic factors that contribute towards your metabolism. Exercise is a common method of increasing your metabolism.

► YOUR RESULT ◀

NORMAL

Your genotype is associated with a normal resting metabolic rate.



YOUR RELATED GENES

Gene Tested	Your Genotype	Scientific Strength
LEPR-rs8179183	G/G	★★★★



YOUR BODY AND WEIGHT ADIPONECTIN LEVELS

Adiponectin is a hormone that is produced by fat cells and functions in the body to trigger your liver and muscles to get energy from fat⁷⁵. Higher levels of adiponectin are considered good for weight loss and health⁷⁶. Your health care provider can test your adiponectin levels. If you have low levels, losing weight may be a good way to increase your adiponectin levels⁷⁵. A variant in the adiponectin gene (ADIPOQ) is associated with adiponectin levels. People with A/A or A/G genotypes were associated with "Possibly Low" levels of adiponectin, while those with the G/G genotype had "Typical" levels⁷⁷.

► YOUR RESULT ◀

TYPICAL

Your genotype is not associated with lower adiponectin levels.



YOUR RELATED GENES

Gene Tested	Your Genotype	Scientific Strength
ADIPOQ-rs17366568	G/G	★★★★



YOUR METABOLIC HEALTH CAN BE INFLUENCED BY MANY GENES.

Your report includes genetic variants that measure your likelihood for having decreased HDL cholesterol levels, as well as elevated LDL cholesterol, blood sugar and triglyceride levels. All of these are indicators of adverse metabolic health, which are precursors to various health conditions, including coronary artery disease, stroke and type 2 diabetes. Your genetic results for these metabolic health factors are summarized below.

► YOUR PROBABILITIES ◀



ELEVATED LDL CHOLESTEROL

page:37

HIGH



DECREASED HDL CHOLESTEROL

page:38

BELOW AVERAGE



ELEVATED TRIGLYCERIDES

page:39

AVERAGE



ELEVATED BLOOD SUGAR

page:40

ABOVE AVERAGE



YOUR HEALTH RECOMMENDATIONS

- ✓ You have a higher than average genetic likelihood for obesity. There are many health risks associated with obesity and you should take action as soon as possible to reduce your risks.
- ✓ You have a genetic profile consistent with elevated LDL (bad) cholesterol levels in the borderline high range or above. Regular monitoring of your cholesterol by your physician is recommended.
- ✓ Your genetic profile shows a higher than average likelihood for elevated blood sugar levels, which are often associated with insulin resistance and can lead to type 2 diabetes. Regular monitoring of your blood sugar by your physician is recommended.



METABOLIC HEALTH FACTORS

ELEVATED LDL CHOLESTEROL

Low-density lipoprotein (LDL) is the type of cholesterol that can become dangerous if you have too much of it. Like gunk clogging up your kitchen drain, LDL cholesterol can form plaque and build up on the walls of your arteries. This can make your arteries narrower and less flexible, which then puts you at risk for conditions like a heart attack or stroke. Optimally, LDL levels should be less than 100 mg/dl. Near-optimal levels range from 100 to 129 mg/dl and borderline high from 130 to 159 mg/dl. A score greater than 160 mg/dl is high and greater than 190 mg/dl is very high. Your physician can measure your cholesterol levels.

A genetic result of "High" or "Above Average" does not mean you have elevated LDL cholesterol levels, but tells you that you may have a propensity for elevated LDL cholesterol levels. On the other hand, a result of "Low" or "Below Average," tells you that you have a lower than average likelihood for elevated LDL cholesterol levels. This report is based on genetic variants studied in over 19,000 individuals. A genetic result of "High" means that you share a similar genetic profile with individuals from the Framingham Heart Study who had elevated LDL cholesterol levels measuring, on average, above 139 mg/dl with approximately 25% of individuals measuring above 160 mg/dl⁸. A genetic result of "Above Average" means that you share a similar genetic profile with individuals measuring, on average, above 130 mg/dl LDL with approximately 17% of individuals measuring above 160 mg/dl LDL cholesterol⁸. A genetic result of "Average" means that you share a similar genetic profile with individuals measuring, on average, near-optimal LDL cholesterol levels. Diet plays an important part in LDL levels. Foods high in saturated fat and trans fat can contribute to elevated LDL levels.

► YOUR PROBABILITY ◀

HIGH

You share a similar genetic profile with individuals who exhibit borderline-high LDL cholesterol levels. Therefore, you have a higher than average likelihood for elevated LDL cholesterol levels.

YOUR RELATED GENES

Gene Tested	Your Genotype	Scientific Strength
PCSK9-rs11206510	C/C	★★★★★
INTERGENIC-rs1501908	G/G	★★★★★
CELSR2-rs12740374	G/G	★★★★★
MAFB-rs6102059	C/C	★★★★★
ABCG8-rs6544713	T/T	★★★★★
APOB-rs515135	G/G	★★★★★
NCAN-rs10401969	T/T	★★★★★
HMGCR-rs3846663	T/C	★★★★★
HNF1A-rs2650000	C/C	★★★★★
LDLR-rs6511720	G/G	★★★★★



METABOLIC HEALTH FACTORS
DECREASED HDL CHOLESTEROL

High-density lipoprotein (HDL) cholesterol is known as good cholesterol, because high levels of HDL cholesterol seem to protect against heart attack, while low levels of HDL cholesterol (less than 40 mg/dL) increase the risk of heart disease⁷⁸. While multiple mechanisms are known to account for this, the major one is thought to be the role of HDL in transporting excess cholesterol away from the arteries and back to the liver, where it is passed from the body⁷⁹. Your HDL cholesterol can be measured with a simple blood test. In men, typical HDL cholesterol levels range from 40 to 50 mg/dl. In women, female hormones cause typical HDL cholesterol levels to range from 50 to 60 mg/dl; however, after menopause there is a tendency for decreased HDL cholesterol levels. Foods containing trans fats can lower HDL cholesterol levels, which is unhealthy. Cholesterol levels should be monitored by your physician.

A genetic result of "High" or "Above Average" does not mean you have decreased HDL cholesterol levels, but tells you that you may have a high propensity for decreased HDL cholesterol levels. On the other hand, a result of "Low" or "Below Average," tells you that you have a lower than average propensity for decreased HDL cholesterol levels. Our genetic testing is based on genetic variants studied in over 19,000 individuals. A result of "High" means that you share a similar genetic profile with individuals from the Framingham Heart Study who had decreased HDL cholesterol levels measuring, on average, below 46 mg/dl with approximately 37% of individuals measuring below 40 mg/dl⁸. On the other hand, a result of "Above Average" means that you share a similar genetic profile with individuals measuring, on average, below 50 mg/dl HDL cholesterol with approximately 30% of individuals measuring below 40 mg/dl HDL cholesterol⁸.

▶ YOUR PROBABILITY ◀

BELOW AVERAGE

Based on your genetic profile you have a lower than average likelihood for decreased HDL cholesterol levels.

🧬 YOUR RELATED GENES

Gene Tested	Your Genotype	Scientific Strength
ZNF259-rs964184	C/C	★★★★★
PLTP-rs7679	T/T	★★★★★
ABCA1-rs1883025	A/G	★★★★★
GALNT2-rs4846914	G/G	★★★★★
LIPG-rs4939883	C/C	★★★★★
FADS1-rs174547	T/T	★★★★★
ANGPTL4-rs2967605	G/G	★★★★★
CETP-rs173539	T/T	★★★★★
HNF4A-rs1800961	C/C	★★★★★
LPL-rs12678919	A/A	★★★★★
LIPC-rs10468017	C/C	★★★★★
TTC39B-rs471364	A/A	★★★★★
LCAT-rs2271293	A/G	★★★★★
KCTD10-rs2338104	C/G	★★★★★



METABOLIC HEALTH FACTORS
ELEVATED TRIGLYCERIDES

Triglyceride is the chemical term for fat as it is stored in your body. People with elevated triglycerides are at risk of conditions, such as coronary artery disease or type 2 diabetes. Having higher triglycerides is often associated with poor lifestyle choices, such as lack of exercise, excessive alcohol consumption, cigarette smoking, excessive refined carbohydrate consumption and being overweight. A normal triglyceride score is under 150 mg/dl. Triglyceride levels in the range of 150 to 199 mg/dl are defined as borderline high, with over 200 mg/dl considered high and over 500 mg/dl very high. Your triglyceride levels can be monitored by your physician.

A result of "High" or "Above Average" does not mean you have elevated triglyceride levels, but tells you that you may have a propensity for elevated triglycerides levels. On the other hand, a genetic test result of "Low" or "Below Average," tells you that you have a lower than average likelihood for elevated triglyceride levels. The genetic test is based on genetic variants studied in over 19,000 individuals. A genetic result of "High" means that you share a similar genetic profile with individuals from the Framingham Heart Study who had elevated triglyceride levels measuring on average above 150 mg/dl with approximately 31% of individuals measuring above 200 mg/dl⁸.



▶ YOUR PROBABILITY ◀

AVERAGE

Based on your genetic profile you have an average likelihood for elevated triglyceride levels.

▶ YOUR RELATED GENES ◀

Gene Tested	Your Genotype	Scientific Strength
ZNF259-rs964184	C/C	★★★★★
PLTP-rs7679	T/T	★★★★★
FADS1-rs174547	T/T	★★★★★
LPL-rs12678919	A/A	★★★★★
APOB-rs7557067	A/G	★★★★★
ANGPTL3-rs10889353	A/A	★★★★★
TRIB1-rs2954029	A/T	★★★★★
XKR6-rs7819412	A/A	★★★★★
GCKR-rs1260326	T/C	★★★★★
NCAN-rs17216525	C/C	★★★★★
MLXIPL-rs714052	T/T	★★★★★



METABOLIC HEALTH FACTORS
ELEVATED BLOOD SUGAR



Elevated blood sugar is a health condition that results from higher than normal levels of sugar in the blood plasma. High blood sugar levels are measured as a reading greater than 140 mg/dl or a fasting plasma glucose level of greater than 100 mg/dl. High blood sugar levels often indicate a condition called insulin resistance and can lead to type 2 diabetes. Your physician can directly measure blood sugar or you can use a blood test at home to check your blood sugar.

A genetic result of "High" or "Above Average" does not mean you have elevated blood sugar levels, but tells you that you may have a propensity for elevated blood sugar levels. On the other hand, a result of "Low" or "Below Average," tells you that you have a lower than average likelihood for elevated blood sugar levels. This report is based on genetic variants studied in over 100,000 individuals. A genetic result of "High" means that you share a similar genetic profile with individuals exhibiting elevated fasting plasma glucose levels⁹. The corresponding fasting plasma glucose levels are associated with an increased likelihood for future development of type 2 diabetes⁹.

▶ YOUR PROBABILITY ◀

ABOVE AVERAGE

Based on your genetic profile you have a higher than average likelihood for elevated blood sugar levels.

YOUR RELATED GENES

Gene Tested	Your Genotype	Scientific Strength
TCF7L2-rs7903146	T/C	★★★★★
MTNR1B-rs10830963	C/C	★★★★★
SLC30A8-rs13266634	C/C	★★★★★
MADD-rs7944584	A/A	★★★★★
G6PC2-rs560887	G/G	★★★★★
GCKR-rs780094	A/G	★★★★★
ADRA2A-rs10885122	-/-	★★★★★
ADCY5-rs11708067	A/A	★★★★★
IGF1-rs35767	G/G	★★★★★
CRY2-rs11605924	A/A	★★★★★
PROX1-rs340874	C/C	★★★★★
FADS1-rs174550	T/T	★★★★★
INTERGENIC-rs2191349	G/T	★★★★★
GCK-rs4607517	G/G	★★★★★
GLIS3-rs7034200	A/A	★★★★★
SLC2A2-rs11920090	T/T	★★★★★

END OF REPORT



The scientific studies referenced in this report are provided below and can be referenced at www.pubmed.gov. All of these papers were published in peer-reviewed journals. PubMed is a service managed by the National Institutes of Health (NIH), a part of the U.S. Department of Health and Human Services, and it tracks more than 19 million citations for biomedical articles and scientific research.

1. O'Rahilly S et al. Human Obesity: A Heritable Neurobehavioral Disorder That Is Highly Sensitive To Environmental Conditions. *Diabetes* **57**, 2905-10 (2008).
2. Ordovas JM et al. Dietary Fat Intake Determines The Effect Of A Common Polymorphism In The Hepatic Lipase Gene Promoter On High-density Lipoprotein Metabolism: Evidence Of A Strong Dose Effect In This Gene-nutrient Interaction In The Framingham Study. *Circulation* **106**, 2315-21 (2002).
3. Junyent M et al. Novel Variants At KCTD10, MVK, And MMAB Genes Interact With Dietary Carbohydrates To Modulate HDL-cholesterol Concentrations In The Genetics Of Lipid Lowering Drugs And Diet Network Study. *The American Journal Of Clinical Nutrition* **90**, 686-94 (2009).
4. Sonestedt E et al. Fat And Carbohydrate Intake Modify The Association Between Genetic Variation In The FTO Genotype And Obesity. *The American Journal Of Clinical Nutrition* **90**, 1418-25 (2009).
5. Corella D et al. APOA2, Dietary Fat, And Body Mass Index: Replication Of A Gene-diet Interaction In 3 Independent Populations. *Archives Of Internal Medicine* **169**, 1897-906 (2009).
6. Warodomwicht D et al. ADIPOQ Polymorphisms, Monounsaturated Fatty Acids, And Obesity Risk: The GOLDN Study. *Obesity (Silver Spring, Md.)* **17**, 510-7 (2009).
7. Memisoglu A et al. Interaction Between A Peroxisome Proliferator-activated Receptor Gamma Gene Polymorphism And Dietary Fat Intake In Relation To Body Mass. *Human Molecular Genetics* **12**, 2923-9 (2003).
8. Kathiresan S et al. Common Variants At 30 Loci Contribute To Polygenic Dyslipidemia. *Nature Genetics* **41**, 56-65 (2009).
9. Dupuis J et al. New Genetic Loci Implicated In Fasting Glucose Homeostasis And Their Impact On Type 2 Diabetes Risk. *Nature Genetics* **42**, 105-16 (2010).
10. Epstein LH et al. Food Reinforcement, The Dopamine D2 Receptor Genotype, And Energy Intake In Obese And Nonobese Humans. *Behavioral Neuroscience* **121**, 877-86 (2007).
11. Doehring A et al. Genetic Diagnostics Of Functional Variants Of The Human Dopamine D2 Receptor Gene. *Psychiatric Genetics* **19**, 259-68 (2009).
12. Eny KM et al. Dopamine D2 Receptor Genotype (C957T) And Habitual Consumption Of Sugars In A Free-living Population Of Men And Women. *Journal Of Nutrigenetics And Nutrigenomics* **2**, 235-42 (2009).
13. de Krom M et al. Common Genetic Variations In CCK, Leptin, And Leptin Receptor Genes Are Associated With Specific Human Eating Patterns. *Diabetes* **56**, 276-80 (2007).
14. Bouchard L et al. Neuromedin Beta: A Strong Candidate Gene Linking Eating Behaviors And Susceptibility To Obesity. *The American Journal Of Clinical Nutrition* **80**, 1478-86 (2004).
15. Frayling TM et al. A Common Variant In The FTO Gene Is Associated With Body Mass Index And Predisposes To Childhood And Adult Obesity. *Science (New York, N.Y.)* **316**, 889-94 (2007).
16. Wardle J et al. Obesity Associated Genetic Variation In FTO Is Associated With Diminished Satiety. *The Journal Of Clinical Endocrinology And Metabolism* **93**, 3640-3 (2008).
17. den Hoed M et al. Postprandial Responses In Hunger And Satiety Are Associated With The Rs9939609 Single Nucleotide Polymorphism In FTO. *The American Journal Of Clinical Nutrition* **90**, 1426-32 (2009).



18. Dotson CD et al. Variation In The Gene TAS2R38 Is Associated With The Eating Behavior Disinhibition In Old Order Amish Women. *Appetite* **54**, 93-9 (2010).
19. Epstein LH et al. Food Reinforcement. *Appetite* **46**, 22-5 (2006).
20. Eny KM et al. Genetic Variant In The Glucose Transporter Type 2 Is Associated With Higher Intakes Of Sugars In Two Distinct Populations. *Physiological Genomics* **33**, 355-60 (2008).
21. Cornelis MC et al. Coffee, Caffeine, And Coronary Heart Disease. *Current Opinion In Clinical Nutrition And Metabolic Care* **10**, 745-51 (2007).
22. Sachse C et al. Functional Significance Of A C-->A Polymorphism In Intron 1 Of The Cytochrome P450 CYP1A2 Gene Tested With Caffeine. *British Journal Of Clinical Pharmacology* **47**, 445-9 (1999).
23. Djordjevic N et al. Induction Of CYP1A2 By Heavy Coffee Consumption Is Associated With The CYP1A2 -163C>A Polymorphism. *European Journal Of Clinical Pharmacology* **66**, 697-703 (2010).
24. Gunes A et al. Variation In CYP1A2 Activity And Its Clinical Implications: Influence Of Environmental Factors And Genetic Polymorphisms. *Pharmacogenomics* **9**, 625-37 (2008).
25. Zhou SF et al. Structure, Function, Regulation And Polymorphism And The Clinical Significance Of Human Cytochrome P450 1A2. *Drug Metabolism Reviews* **42**, 268-354 (2010).
26. Kim UK et al. Positional Cloning Of The Human Quantitative Trait Locus Underlying Taste Sensitivity To Phenylthiocarbamide. *Science (New York, N.Y.)* **299**, 1221-5 (2003).
27. Hayes JE et al. Explaining Variability In Sodium Intake Through Oral Sensory Phenotype, Salt Sensation And Liking. *Physiology & Behavior* **100**, 369-80 (2010).
28. Fushan AA et al. Allelic Polymorphism Within The TAS1R3 Promoter Is Associated With Human Taste Sensitivity To Sucrose. *Current Biology : CB* **19**, 1288-93 (2009).
29. Olds LC et al. Lactase Persistence DNA Variant Enhances Lactase Promoter Activity In Vitro: Functional Role As A Cis Regulatory Element. *Human Molecular Genetics* **12**, 2333-40 (2003).
30. Troelsen JT et al. An Upstream Polymorphism Associated With Lactase Persistence Has Increased Enhancer Activity. *Gastroenterology* **125**, 1686-94 (2003).
31. Enattah NS et al. Identification Of A Variant Associated With Adult-type Hypolactasia. *Nature Genetics* **30**, 233-7 (2002).
32. Matsuo K et al. Alcohol Dehydrogenase 2 His47Arg Polymorphism Influences Drinking Habit Independently Of Aldehyde Dehydrogenase 2 Glu487Lys Polymorphism: Analysis Of 2,299 Japanese Subjects. *Cancer Epidemiology, Biomarkers & Prevention : A Publication Of The American Association For Cancer Research, Cosponsored By The American Society Of Preventive Oncology* **15**, 1009-13 (2006).
33. Tanaka F et al. Polymorphism Of Alcohol-metabolizing Genes Affects Drinking Behavior And Alcoholic Liver Disease In Japanese Men. *Alcoholism, Clinical And Experimental Research* **21**, 596-601 (1997).
34. Higuchi S et al. Influence Of Genetic Variations Of Ethanol-metabolizing Enzymes On Phenotypes Of Alcohol-related Disorders. *Annals Of The New York Academy Of Sciences* **1025**, 472-80 (2004).
35. Tanaka T et al. Genome-wide Association Study Of Vitamin B6, Vitamin B12, Folate, And Homocysteine Blood Concentrations. *American Journal Of Human Genetics* **84**, 477-82 (2009).
36. Hazra A et al. Genome-wide Significant Predictors Of Metabolites In The One-carbon Metabolism Pathway. *Human Molecular Genetics* **18**, 4677-87 (2009).
37. Zittoun J et al. Modern Clinical Testing Strategies In Cobalamin And Folate Deficiency. *Seminars In Hematology* **36**, 35-46 (1999).



38. Hazra A et al. Common Variants Of FUT2 Are Associated With Plasma Vitamin B12 Levels. *Nature Genetics* **40**, 1160-2 (2008).
39. Bailey LB et al. Folate Metabolism And Requirements. *The Journal Of Nutrition* **129**, 779-82 (1999).
40. Yang QH et al. Prevalence And Effects Of Gene-gene And Gene-nutrient Interactions On Serum Folate And Serum Total Homocysteine Concentrations In The United States: Findings From The Third National Health And Nutrition Examination Survey DNA Bank. *The American Journal Of Clinical Nutrition* **88**, 232-46 (2008).
41. Voutilainen S et al. Low Dietary Folate Intake Is Associated With An Excess Incidence Of Acute Coronary Events: The Kuopio Ischemic Heart Disease Risk Factor Study. *Circulation* **103**, 2674-80 (2001).
42. Gerster H. Vitamin A--functions, Dietary Requirements And Safety In Humans. *International Journal For Vitamin And Nutrition Research. Internationale Zeitschrift Fur Vitamin- Und Ernährungsforschung. Journal International De Vitaminologie Et De Nutrition* **67**, 71-90 (1997).
43. Semba RD. The Role Of Vitamin A And Related Retinoids In Immune Function. *Nutrition Reviews* **56**, S38-48 (1998).
44. Dawson MI. The Importance Of Vitamin A In Nutrition. *Current Pharmaceutical Design* **6**, 311-25 (2000).
45. Ross AC et al. The Function Of Vitamin A In Cellular Growth And Differentiation, And Its Roles During Pregnancy And Lactation. *Advances In Experimental Medicine And Biology* **352**, 187-200 (1994).
46. Leung WC et al. Two Common Single Nucleotide Polymorphisms In The Gene Encoding Beta-carotene 15,15'-monooxygenase Alter Beta-carotene Metabolism In Female Volunteers. *The FASEB Journal : Official Publication Of The Federation Of American Societies For Experimental Biology* **23**, 1041-53 (2009).
47. Witschi JC et al. Preformed Vitamin A, Carotene, And Total Vitamin A Activity In Usual Adult Diets. *Journal Of The American Dietetic Association* **57**, 13-6 (1970).
48. Solomons NW et al. Plant Sources Of Provitamin A And Human Nutriture. *Nutrition Reviews* **51**, 199-204 (1993).
49. Holick MF. Vitamin D And Bone Health. *The Journal Of Nutrition* **126**, 1159S-64S (1996).
50. Ahn J et al. Vitamin D-related Genes, Serum Vitamin D Concentrations And Prostate Cancer Risk. *Carcinogenesis* **30**, 769-76 (2009).
51. Wang TJ et al. Common Genetic Determinants Of Vitamin D Insufficiency: A Genome-wide Association Study. *Lancet* **376**, 180-8 (2010).
52. Beharka A et al. Vitamin E Status And Immune Function. *Methods In Enzymology* **282**, 247-63 (1997).
53. Morrissey PA et al. Optimal Nutrition: Vitamin E. *The Proceedings Of The Nutrition Society* **58**, 459-68 (1999).
54. Ferrucci L et al. Common Variation In The Beta-carotene 15,15'-monooxygenase 1 Gene Affects Circulating Levels Of Carotenoids: A Genome-wide Association Study. *American Journal Of Human Genetics* **84**, 123-33 (2009).
55. Bartali B et al. Serum Micronutrient Concentrations And Decline In Physical Function Among Older Persons. *JAMA : The Journal Of The American Medical Association* **299**, 308-15 (2008).
56. Maras JE et al. Intake Of Alpha-tocopherol Is Limited Among US Adults. *Journal Of The American Dietetic Association* **104**, 567-75 (2004).
57. Garenc C et al. Evidence Of LPL Gene-exercise Interaction For Body Fat And LPL Activity: The HERITAGE Family Study. *Journal Of Applied Physiology (Bethesda, Md. : 1985)* **91**, 1334-40 (2001).
58. Teran-Garcia M et al. Hepatic Lipase Gene Variant -514C>T Is Associated With Lipoprotein And Insulin Sensitivity Response To Regular Exercise: The HERITAGE Family Study. *Diabetes* **54**, 2251-5 (2005).



59. Hautala AJ et al. Peroxisome Proliferator-activated Receptor-delta Polymorphisms Are Associated With Physical Performance And Plasma Lipids: The HERITAGE Family Study. *American Journal Of Physiology. Heart And Circulatory Physiology* **292**, H2498-505 (2007).
60. Orkunoglu-Suer FE et al. INSIG2 Gene Polymorphism Is Associated With Increased Subcutaneous Fat In Women And Poor Response To Resistance Training In Men. *BMC Medical Genetics* **9**, 117 (2008).
61. Yang N et al. ACTN3 Genotype Is Associated With Human Elite Athletic Performance. *American Journal Of Human Genetics* **73**, 627-31 (2003).
62. Druzhevskaya AM et al. Association Of The ACTN3 R577X Polymorphism With Power Athlete Status In Russians. *European Journal Of Applied Physiology* **103**, 631-4 (2008).
63. Raleigh SM et al. Variants Within The MMP3 Gene Are Associated With Achilles Tendinopathy: Possible Interaction With The COL5A1 Gene. *British Journal Of Sports Medicine* **43**, 514-20 (2009).
64. Li S et al. Cumulative Effects And Predictive Value Of Common Obesity-susceptibility Variants Identified By Genome-wide Association Studies. *The American Journal Of Clinical Nutrition* **91**, 184-90 (2010).
65. Vimalaswaran KS et al. Physical Activity Attenuates The Body Mass Index-increasing Influence Of Genetic Variation In The FTO Gene. *The American Journal Of Clinical Nutrition* **90**, 425-8 (2009).
66. Rankinen T et al. Effect Of Endothelin 1 Genotype On Blood Pressure Is Dependent On Physical Activity Or Fitness Levels. *Hypertension* **50**, 1120-5 (2007).
67. Rankinen T et al. Genetics Of Food Intake And Eating Behavior Phenotypes In Humans. *Annual Review Of Nutrition* **26**, 413-34 (2006).
68. van Vliet-Ostaptchouk JV et al. Genetic Variation In The Hypothalamic Pathways And Its Role On Obesity. *Obesity Reviews : An Official Journal Of The International Association For The Study Of Obesity* **10**, 593-609 (2009).
69. Morton LM et al. DRD2 Genetic Variation In Relation To Smoking And Obesity In The Prostate, Lung, Colorectal, And Ovarian Cancer Screening Trial. *Pharmacogenetics And Genomics* **16**, 901-10 (2006).
70. Kaplan LM. Pharmacologic Therapies For Obesity. *Gastroenterology Clinics Of North America* **39**, 69-79 (2010).
71. Antunes LC et al. Obesity And Shift Work: Chronobiological Aspects. *Nutrition Research Reviews* **23**, 155-68 (2010).
72. Garaulet M et al. The Chronobiology, Etiology And Pathophysiology Of Obesity. *International Journal Of Obesity (2005)* **34**, 1667-83 (2010).
73. Goyenechea E et al. The - 11391 G/A Polymorphism Of The Adiponectin Gene Promoter Is Associated With Metabolic Syndrome Traits And The Outcome Of An Energy-restricted Diet In Obese Subjects. *Hormone And Metabolic Research = Hormon-Und Stoffwechselforschung = Hormones Et Metabolisme* **41**, 55-61 (2009).
74. Loos RJ et al. Polymorphisms In The Leptin And Leptin Receptor Genes In Relation To Resting Metabolic Rate And Respiratory Quotient In The Québec Family Study. *International Journal Of Obesity (2005)* **30**, 183-90 (2006).
75. Puglisi MJ et al. Modulation Of C-reactive Protein, Tumor Necrosis Factor-alpha, And Adiponectin By Diet, Exercise, And Weight Loss. *The Journal Of Nutrition* **138**, 2293-6 (2008).
76. Qi Y et al. Adiponectin Acts In The Brain To Decrease Body Weight. *Nature Medicine* **10**, 524-9 (2004).
77. Heid IM et al. Clear Detection Of ADIPOQ Locus As The Major Gene For Plasma Adiponectin: Results Of Genome-wide Association Analyses Including 4659 European Individuals. *Atherosclerosis* **208**, 412-20 (2010).
78. Natarajan P et al. High-density Lipoprotein And Coronary Heart Disease: Current And Future Therapies. *Journal Of The American College Of Cardiology* **55**, 1283-99 (2010).

NAME/ID: TIMOTHY PARRETT
SEX: MALE
ACC #: B0002960
DATE: DEC 12, 2011



79. Alwaili K et al. High-density Lipoproteins And Cardiovascular Disease: 2010 Update. *Expert Review Of Cardiovascular Therapy* **8**, 413-23 (2010).



Risks & Limitations

Risks

Risk of Laboratory Error

Pathway is a certified laboratory under the federal Clinical Laboratory Improvement Amendments of 1988 (CLIA) with standard and effective procedures in place for handling samples. However, laboratory error can occur, which might lead to incorrect results. Examples include, but are not limited to, a sample or DNA mislabeling or contamination, failure to obtain an interpretable report, and any other operational laboratory error. I understand that sometimes Pathway's laboratory may need a second sample to complete my testing.

Risk of laboratory technical problems

Pathway's CLIA-certified laboratory also has standard and effective procedures in place to protect against technical and operational problems. However, such problems may still occur and examples include, but are not limited to, failure to obtain an interpretable result for a particular SNP. Sometimes it is not possible to obtain a testing result for a particular mutation or marker due to circumstances beyond Pathway's control, in which case it may not be possible for Pathway to conclusively report on a genetic change that might cause or be predictive of a condition. This may mean that Pathway cannot report my results for a particular health trait or condition, carrier status result, drug response, or other phenotype. Pathway may re-test my sample in order to obtain these results, but upon re-testing the results may still not be obtained. As with all medical laboratory testing, there is a small chance that the laboratory could report false positive or false negative results. A false positive result means that a genotype is reported as being present when it is actually not present. A false negative result means that a genotype is not reported as being present when it actually is present. A tested individual may wish to pursue further testing to verify any results.

Limitations

The purpose of this test is to provide information about how a tested individual's genes affect their metabolism, weight, exercise, energy use, eating behavior, diet and nutritional choices. Tested individuals should not change their diet, physical activity, or any medical treatments they are currently using based on genetic testing results without consulting their personal health care provider.

Tested individuals may find that their experience is not consistent with Pathway's selected peer-reviewed scientific research findings of relative improvement for the study group(s). The science in this area is still developing and many personal health factors affect diet and health. Since subjects in the scientific studies referenced in this report may have had personal health and other factors different from those of tested individuals, results from these studies may not be representative of the results experienced by tested individuals. Further, some recommendations may or may not be attainable, depending on the tested individual's physical ability or other personal health factors. A limitation of this testing is that most scientific studies have been performed in Caucasian populations only. The interpretations and recommendations are done in the context of Caucasian studies, but the results may or may not be relevant to tested individuals of different or mixed ethnicities.

The association between genetic mutations and the information in your Pathway Fit® report is an active area of scientific research, and future scientific discoveries might alter our understanding of how this information is related to your diet, nutrition, and exercise.

Based on test results and other medical knowledge of the tested individual, health care providers might consider additional independent testing, or consult another health care provider or genetic counselor.



Change History

There are three ways in which this genetic report might get modified. A description of those methods is below, followed by a table listing all modifications to this report.

Corrected	A report is annotated as "Corrected" if there was an error in genotypic data or the algorithms for interpretation of genotypic data that changes a patient's result from a previous report. When a correction is issued, we will notate it along with the date on the summary and the details pages, and communicate the correction to the ordering physician via phone or email. Details of the correction will be provided in the Appendix, along with the date that it occurred.
Updated	A report is annotated as "Updated" when or if we make a substantial modification to the descriptive content in one of our reports, which is typically done to improve clarity or precision. Some updates, such as grammatical corrections or typos, may not be annotated at all, and we will not always send out communications about an update. Details of the update will be provided in the Appendix, along with the date that it occurred.
New	A report is annotated as "New" if we add a new condition or significant piece of content to a report. When a report is amended, we will notate it along with the date on the summary and details page, though we may remove the amended annotation after 6 months from the point it was added. Details of the amendment will be provided in the Appendix, along with the date that it occurred.